

LORD TED'S WORK BREAK QUIZ



Hurrah!!

ROUND A – CONNECTIONS



COMPLETE THE CONNECTION WITH THE FOURTH
PHOTO AND YOUR REASON WHY

TWO POINTS FOR EACH CORRECT ANSWER
FIVE QUESTIONS, MAXIMUM SCORE 10 POINTS

QUESTION ONE - COMPLETE THE CONNECTION BETWEEN THE PHOTOS & WHY?

1



2

3

4

QUESTION ONE - COMPLETE THE CONNECTION BETWEEN THE PHOTOS & WHY?

1



2



3

4

QUESTION ONE - COMPLETE THE CONNECTION BETWEEN THE PHOTOS & WHY?

1



2



3



4

QUESTION ONE - COMPLETE THE CONNECTION BETWEEN THE PHOTOS & WHY?

1



2



3



4



QUESTION TWO – COMPLETE THE CONNECTION BETWEEN THE PHOTOS & WHY?

1



2

3

4

QUESTION TWO – COMPLETE THE CONNECTION BETWEEN THE PHOTOS & WHY?

1



2



3

4

QUESTION TWO – COMPLETE THE CONNECTION BETWEEN THE PHOTOS & WHY?

1



2



3



4

QUESTION TWO – COMPLETE THE CONNECTION BETWEEN THE PHOTOS & WHY?

1



2



3



4



QUESTION THREE - COMPLETE THE CONNECTION BETWEEN THE PHOTOS & WHY?

1



2

3

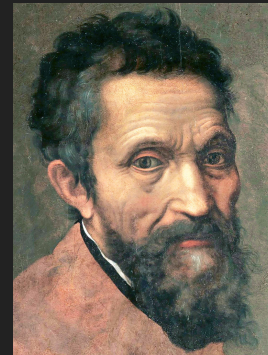
4

QUESTION THREE - COMPLETE THE CONNECTION BETWEEN THE PHOTOS & WHY?

1



2



3

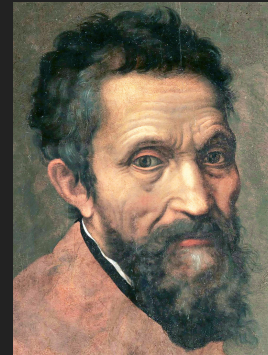
4

QUESTION THREE - COMPLETE THE CONNECTION BETWEEN THE PHOTOS & WHY?

1



2



3



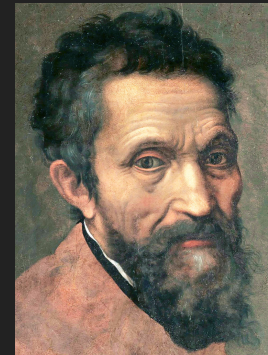
4

QUESTION THREE - COMPLETE THE CONNECTION BETWEEN THE PHOTOS & WHY?

1



2



3



4



QUESTION FOUR – COMPLETE THE CONNECTION BETWEEN THE PHOTOS & WHY?

1



2

3

4

QUESTION FOUR – COMPLETE THE CONNECTION BETWEEN THE PHOTOS & WHY?

1



2



3

4

QUESTION FOUR – COMPLETE THE CONNECTION BETWEEN THE PHOTOS & WHY?

1



2



3



4

QUESTION FOUR – COMPLETE THE CONNECTION BETWEEN THE PHOTOS & WHY?

1



2



3



4



QUESTION FIVE - COMPLETE THE CONNECTION BETWEEN THE PHOTOS & WHY?

1



2

3

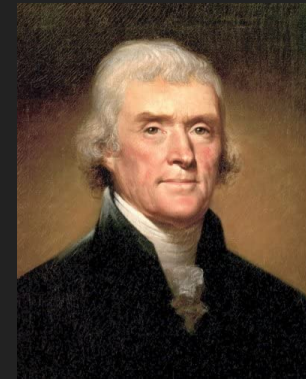
4

QUESTION FIVE - COMPLETE THE CONNECTION BETWEEN THE PHOTOS & WHY?

1



2



3

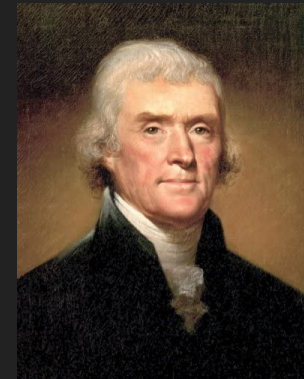
4

QUESTION FIVE - COMPLETE THE CONNECTION BETWEEN THE PHOTOS & WHY?

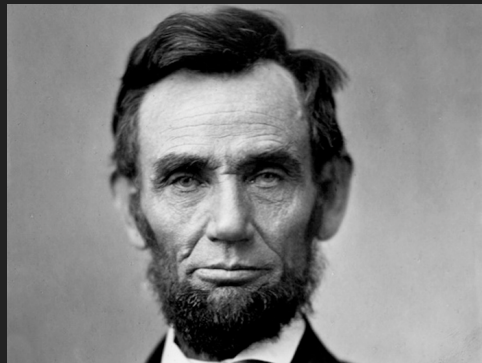
1



2



3



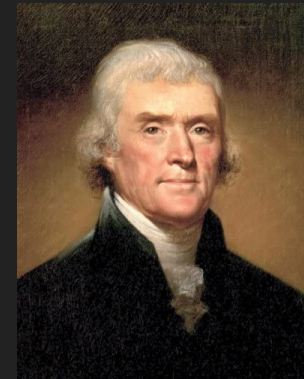
4

QUESTION FIVE - COMPLETE THE CONNECTION BETWEEN THE PHOTOS & WHY?

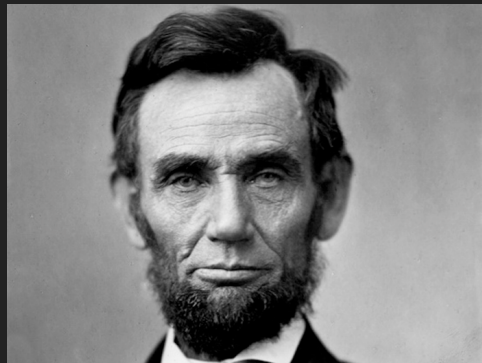
1



2



3



4



ROUND A – ANSWERS – CONNECTIONS



COMPLETE THE CONNECTION WITH THE FOURTH PHOTO
AND YOUR REASON WHY

TWO POINTS FOR EACH CORRECT ANSWER
FIVE QUESTIONS, MAXIMUM SCORE 10 POINTS

ANSWER - QUESTION ONE - COMPLETE THE CONNECTION BETWEEN THE PHOTOS & WHY?

1



2



3



4



ANSWER - QUESTION ONE - COMPLETE THE CONNECTION BETWEEN THE PHOTOS & WHY?

1



2



3



4



FIRST POINT



ANSWER - QUESTION ONE - COMPLETE THE CONNECTION BETWEEN THE PHOTOS & WHY?

1



2



3



4



A STRING QUARTET

SECOND POINT



ANSWER - QUESTION TWO - COMPLETE THE CONNECTION BETWEEN THE PHOTOS & WHY?

1



2



3



4



ANSWER - QUESTION TWO - COMPLETE THE CONNECTION BETWEEN THE PHOTOS & WHY?

1



2



3



4



First Point



ANSWER - QUESTION TWO - COMPLETE THE CONNECTION BETWEEN THE PHOTOS & WHY?

1



2



3



4



The 4 Elements

SECOND POINT

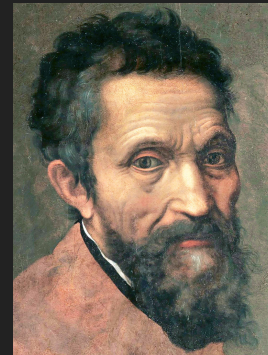


ANSWER - QUESTION THREE - COMPLETE THE CONNECTION BETWEEN THE PHOTOS & WHY?

1



2



3

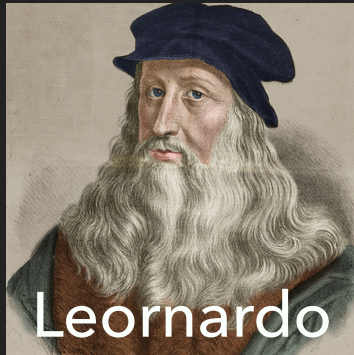


4

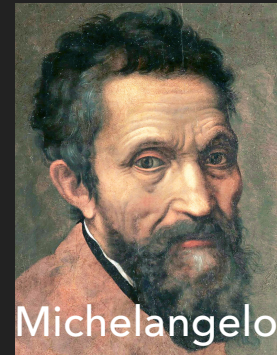


ANSWER - QUESTION THREE - COMPLETE THE CONNECTION BETWEEN THE PHOTOS & WHY?

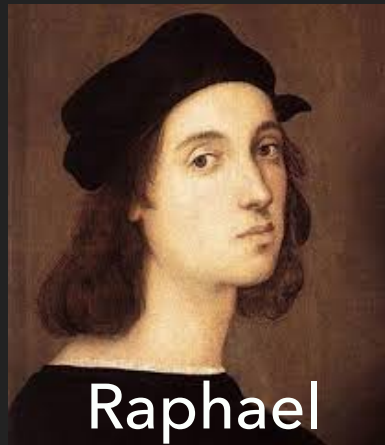
1



2



3



4



First Point



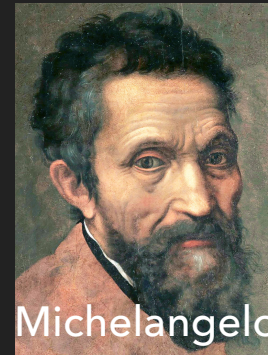
ANSWER - QUESTION THREE - COMPLETE THE CONNECTION BETWEEN THE PHOTOS & WHY?

1



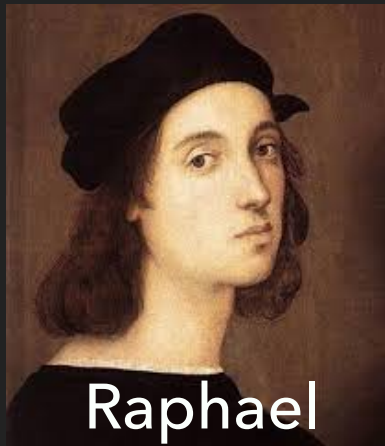
Leornado

2



Michelangelo

3



Raphael

4

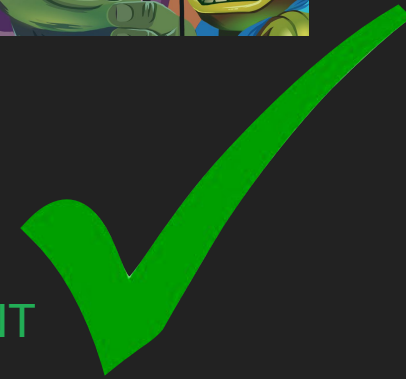


Donatello

Names of the four
Teenage Mutant
Ninja Turtles



SECOND POINT



ANSWER - QUESTION FOUR - COMPLETE THE CONNECTION BETWEEN THE PHOTOS & WHY?

1



2



3



4



ANSWER - QUESTION FOUR - COMPLETE THE CONNECTION BETWEEN THE PHOTOS & WHY?

1



2



3



4



First Point



ANSWER - QUESTION FOUR - COMPLETE THE CONNECTION BETWEEN THE PHOTOS & WHY?

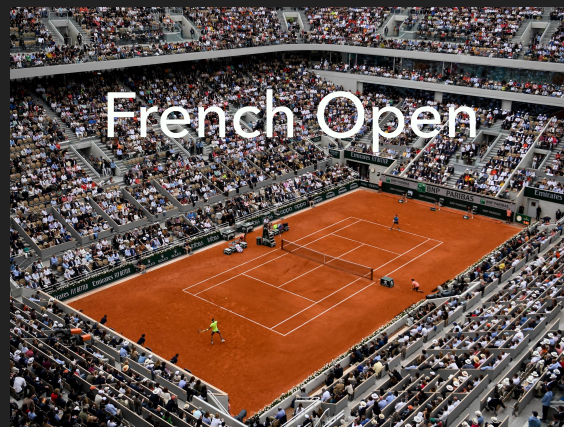
1



2



3



4



SECOND POINT

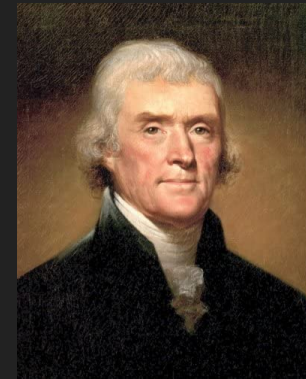
Wimbledon All England Club, Melbourne Park, Roland Garros, Paris, National Tennis Centre, New York

ANSWER - QUESTION FIVE - COMPLETE THE CONNECTION BETWEEN THE PHOTOS & WHY?

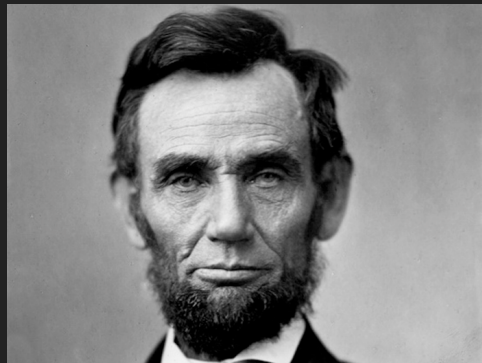
1



2



3



4



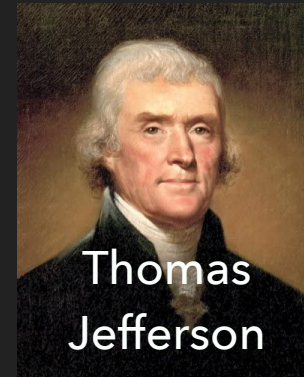
ANSWER - QUESTION FIVE - COMPLETE THE CONNECTION BETWEEN THE PHOTOS & WHY?

1



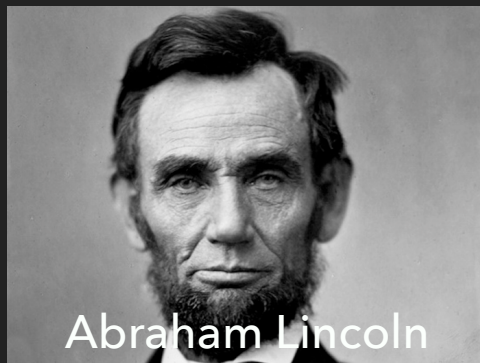
George
Washington

2



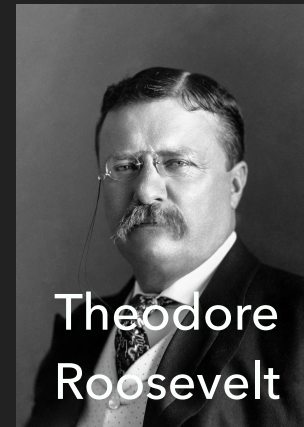
Thomas
Jefferson

3



Abraham Lincoln

4



Theodore
Roosevelt

First Point



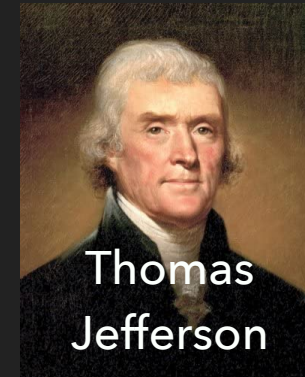
ANSWER - QUESTION FIVE - COMPLETE THE CONNECTION BETWEEN THE PHOTOS & WHY?

1



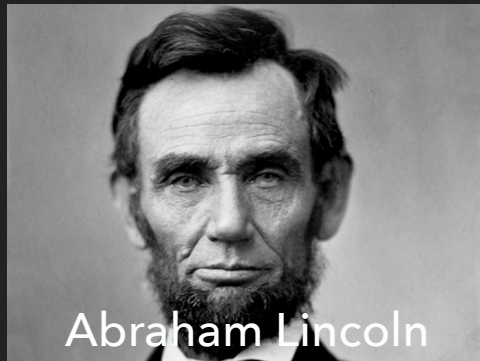
George
Washington

2



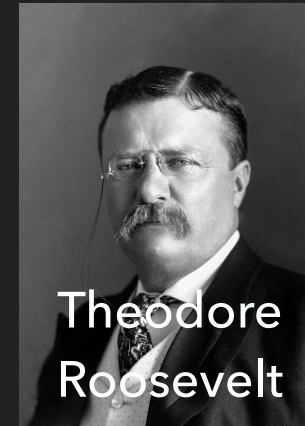
Thomas
Jefferson

3



Abraham Lincoln

4



Theodore
Roosevelt



The Four Sculptures
on Mt Rushmore

SECOND POINT



ROUND B – CHEESE OR SERVICE STATION



YOU HAVE TO GUESS IF THE WORD IS A TYPE OF
CHEESE OR A SERVICE STATION?

ONE POINT FOR EACH CORRECT ANSWER
10 QUESTIONS, MAXIMUM SCORE 10 POINTS

QUESTION ONE – IS IT THE NAME OF A CHEESE OR A SERVICE STATION?

BOTHWELL



OR



QUESTION TWO – IS IT THE NAME OF A CHEESE OR A SERVICE STATION?

DUNLOP



OR



QUESTION THREE – IS IT THE NAME OF A CHEESE OR A SERVICE STATION?

FARLEIGH WALLOP



OR



QUESTION FOUR – IS IT THE NAME OF A CHEESE OR A SERVICE STATION?

GORDANO



OR



QUESTION FIVE – IS IT THE NAME OF A CHEESE OR A SERVICE STATION?

HOPWOOD



OR



QUESTION SIX – IS IT THE NAME OF A CHEESE OR A SERVICE STATION?

HARROGATE



OR



QUESTION SEVEN – IS IT THE NAME OF A CHEESE OR A SERVICE STATION?

SARN



OR



QUESTION EIGHT - IS IT THE NAME OF A CHEESE OR A SERVICE STATION?

TUNWORTH



OR



QUESTION NINE – IS IT THE NAME OF A CHEESE OR A SERVICE STATION?

PARLIC FELL



OR



QUESTION TEN – IS IT THE NAME OF A CHEESE OR A SERVICE STATION?

KINROSS



OR



ROUND B – ANSWERS – CHEESE OR SERVICE STATION



YOU HAVE TO GUESS IF THE WORD IS A TYPE OF
CHEESE OR A SERVICE STATION?

ONE POINT FOR EACH CORRECT ANSWER
10 QUESTIONS, MAXIMUM SCORE 10 POINTS

QUESTION ONE – IS IT THE NAME OF A CHEESE OR A SERVICE STATION?

BOTHWELL



OR



QUESTION ONE – IS IT THE NAME OF A CHEESE OR A SERVICE STATION?

BOTHWELL

Service Station



OR



QUESTION TWO – IS IT THE NAME OF A CHEESE OR A SERVICE STATION?

DUNLOP



OR



QUESTION TWO – IS IT THE NAME OF A CHEESE OR A SERVICE STATION?

DUNLOP

CHEESE



OR



QUESTION THREE – IS IT THE NAME OF A CHEESE OR A SERVICE STATION?

FARLEIGH WALLOP



OR



QUESTION THREE – IS IT THE NAME OF A CHEESE OR A SERVICE STATION?

FARLEIGH WALLOP

CHEESE



OR



QUESTION FOUR – IS IT THE NAME OF A CHEESE OR A SERVICE STATION?

GORDANO



OR



QUESTION FOUR - IS IT THE NAME OF A CHEESE OR A SERVICE STATION?

GORDANO

Service Station



OR



QUESTION FIVE – IS IT THE NAME OF A CHEESE OR A SERVICE STATION?

HOPWOOD



OR



QUESTION FIVE – IS IT THE NAME OF A CHEESE OR A SERVICE STATION?

HOPWOOD

Service Station



OR



QUESTION SIX – IS IT THE NAME OF A CHEESE OR A SERVICE STATION?

HARROGATE



OR



QUESTION SIX - IS IT THE NAME OF A CHEESE OR A SERVICE STATION?

HARROGATE

CHEESE



OR



QUESTION SEVEN - IS IT THE NAME OF A CHEESE OR A SERVICE STATION?

SARN



OR



QUESTION SEVEN - IS IT THE NAME OF A CHEESE OR A SERVICE STATION?

SARN

Service Station



OR



QUESTION EIGHT - IS IT THE NAME OF A CHEESE OR A SERVICE STATION?

TUNWORTH



OR



QUESTION EIGHT - IS IT THE NAME OF A CHEESE OR A SERVICE STATION?

TUNWORTH

CHEESE



OR



QUESTION NINE - IS IT THE NAME OF A CHEESE OR A SERVICE STATION?

PARLIC FELL



OR



QUESTION NINE - IS IT THE NAME OF A CHEESE OR A SERVICE STATION?

PARLIC FELL

CHEESE



OR



QUESTION TEN – IS IT THE NAME OF A CHEESE OR A SERVICE STATION?

KINROSS



OR



QUESTION TEN – IS IT THE NAME OF A CHEESE OR A SERVICE STATION?

KINROSS

Service Station



OR



HALF TIME – TAKE A WELL EARNED BREAK



OR



ROUND C – MULTI-COMPLICATION



FIVE GENERAL KNOWLEDGE QUESTIONS WITH A NUMBER FOR
AN ANSWER WHICH YOU MUST THEN MULTIPLY BY SEVEN TO
GIVE YOUR FINAL ANSWER

ONE POINT FOR EACH CORRECT ANSWER
FIVE QUESTIONS, MAXIMUM OF FIVE POINTS

QUESTION ONE – MULTIPLY YOUR ANSWER BY SEVEN TO GIVE YOUR FINAL ANSWER?

How many children did Queen Victoria have?



QUESTION TWO – MULTIPLY YOUR ANSWER BY SEVEN TO GIVE YOUR FINAL ANSWER?

How many players are there on a netball team?



QUESTION THREE – MULTIPLY YOUR ANSWER BY SEVEN TO GIVE YOUR FINAL ANSWER?

How many times has Del Boy Trotter been married in the BBC sitcom *Only Fools and Horses*?



QUESTION FOUR – MULTIPLY YOUR ANSWER BY SEVEN TO GIVE YOUR FINAL ANSWER?

In English law what is the smallest number of people that can constitute a riot?



QUESTION FOUR – MULTIPLY YOUR ANSWER BY SEVEN TO GIVE YOUR FINAL ANSWER?

What is the only number that equals twice the sum of its two digits



ROUND C – ANSWERS – MULTI-COMPLICATION



FIVE GENERAL KNOWLEDGE QUESTIONS WITH A NUMBER FOR
AN ANSWER WHICH YOU MUST THEN MULTIPLY BY SEVEN TO
GIVE YOUR FINAL ANSWER

ONE POINT FOR EACH CORRECT ANSWER
FIVE QUESTIONS, MAXIMUM OF FIVE POINTS

QUESTION ONE – MULTIPLY YOUR ANSWER BY SEVEN TO GIVE YOUR FINAL ANSWER?

How many children did Queen Victoria have?



QUESTION ONE – MULTIPLY YOUR ANSWER BY SEVEN TO GIVE YOUR FINAL ANSWER?

How many children did Queen Victoria have?

$$9 \times 7 = 63$$



QUESTION TWO – MULTIPLY YOUR ANSWER BY SEVEN TO GIVE YOUR FINAL ANSWER?

How many players are there on a netball team?



QUESTION TWO – MULTIPLY YOUR ANSWER BY SEVEN TO GIVE YOUR FINAL ANSWER?

How many players are there on a netball team?

$$\underline{7} \times 7 = 49$$



QUESTION THREE – MULTIPLY YOUR ANSWER BY SEVEN TO GIVE YOUR FINAL ANSWER?

How many times was Del Boy Trotter married in the BBC sitcom *Only Fools and Horses*?



QUESTION THREE – MULTIPLY YOUR ANSWER BY SEVEN TO GIVE YOUR FINAL ANSWER?

How many times was Del Boy Trotter married in the BBC sitcom *Only Fools and Horses*?

$$\underline{0} \times 7 = 0$$



Del Boy NEVER married!



QUESTION FOUR – MULTIPLY YOUR ANSWER BY SEVEN TO GIVE YOUR FINAL ANSWER?

In English law what is the smallest number of people that can constitute a riot?



QUESTION FOUR – MULTIPLY YOUR ANSWER BY SEVEN TO GIVE YOUR FINAL ANSWER?

In English law what is the smallest number of people that can constitute a riot?

$$\underline{3} \times 7 = 21$$



QUESTION FOUR – MULTIPLY YOUR ANSWER BY SEVEN TO GIVE YOUR FINAL ANSWER?

What is the only number that equals twice the sum of its two digits



QUESTION FOUR – MULTIPLY YOUR ANSWER BY SEVEN TO GIVE YOUR FINAL ANSWER?

What is the only number that equals twice the sum of its two digits

$$\underline{18} \quad 1 + 8 = 9 \times 2 = \underline{18} \times 7 = 126$$



ROUND D – CELEBRITY ELEMENTS



WHO IS THE WELL KNOWN PERSON THAT HAS THE SAME INITIALS AS AN ELEMENT IN THE PERIODIC TABLE?

NAME THE PERSON, THE ELEMENT SYMBOL & THE ELEMENT

THREE POINTS FOR EACH CORRECT ANSWER
FIVE QUESTIONS, MAXIMUM OF FIFTEEN POINTS

QUESTION ONE – NAME THE PERSON, THE ELEMENT SYMBOL & THE ELEMENT ?

Who appeared as himself in a cameo role in the 23rd James Bond film *Skyfall*, presenting a BBC News report

+

A colourless, odourless, tasteless, non-toxic, inert, gas, the first in the noble gas group that is lighter than air and non-flammable.



QUESTION TWO - NAME THE PERSON, THE ELEMENT SYMBOL & THE ELEMENT ?

Who signed hundreds of postcards, because he could not get life insurance & he figured the autographs would be valuable enough to provide for his family if he died at work

+

A chemical element with the atomic number 11. There is a strong correlation between this alkali metal and higher blood pressure.



QUESTION THREE – NAME THE PERSON, THE ELEMENT SYMBOL & THE ELEMENT ?

Name a television presenter, comedian and actress who has co-hosted the TV show, “The Great British Bake Off”

+

A transition metal used in stainless steel



QUESTION FOUR - NAME THE PERSON, THE ELEMENT SYMBOL & THE ELEMENT ?

Name the son of Daedalus, who in,
mythology, attempted to escape from Crete
by means of wings constructed from feathers
and wax

+

The heaviest of the stable halogens, it is
purple in all forms and used as an antiseptic



QUESTION FIVE - NAME THE PERSON, THE ELEMENT SYMBOL & THE ELEMENT ?

A former English international cricketer turned
television personality who won I'm a
Celebrity...Get Me Out of Here

+

A highly un-reactive, precious, silver-white metal.



ROUND D – ANSWERS – CELEBRITY ELEMENTS



WHO IS THE WELL KNOWN PERSON THAT HAS THE SAME INITIALS AS AN ELEMENT IN THE PERIODIC TABLE?

NAME THE PERSON, THE ELEMENT SYMBOL & THE ELEMENT

THREE POINTS FOR EACH CORRECT ANSWER

FIVE QUESTIONS, MAXIMUM OF FIFTEEN POINTS

QUESTION ONE - NAME THE PERSON, THE ELEMENT SYMBOL & THE ELEMENT ?

Who appeared as himself in a cameo role in the 23rd James Bond film *Skyfall*, presenting a BBC News report

+

A colourless, odourless, tasteless, non-toxic, inert, gas, the first in the noble gas group that is lighter than air and non-flammable.



QUESTION ONE - NAME THE PERSON, THE ELEMENT SYMBOL & THE ELEMENT ?

Who appeared as himself in a cameo role in the 23rd James Bond film *Skyfall*, presenting a BBC News report

+

A colourless, odourless, tasteless, non-toxic, inert, gas, the first in the noble gas group that is lighter than air and non-flammable.



Three Points

1. Huw Edwards + He = Helium

QUESTION TWO - NAME THE PERSON, THE ELEMENT SYMBOL & THE ELEMENT ?

Who signed hundreds of postcards, because he could not get life insurance & he figured the autographs would be valuable enough to provide for his family if he died at work

+

A chemical element with the atomic number 11. There is a strong correlation between this alkali metal and higher blood pressure.



QUESTION TWO - NAME THE PERSON, THE ELEMENT SYMBOL & THE ELEMENT ?

Who signed hundreds of postcards, because he could not get life insurance & he figured the autographs would be valuable enough to provide for his family if he died at work

+

A chemical element with the atomic number 11. There is a strong correlation between this alkali metal and higher blood pressure.



Three Points

Neil Armstrong + Na = Sodium

QUESTION THREE - NAME THE PERSON, THE ELEMENT SYMBOL & THE ELEMENT ?

Name an television presenter, comedian and
actress who has co-hosted the TV show,
“The Great British Bake Off”

+

A transition metal used in stainless steel



QUESTION THREE - NAME THE PERSON, THE ELEMENT SYMBOL & THE ELEMENT ?

Name a television presenter, comedian and actress who has co-hosted the TV show, "The Great British Bake Off"

+

A transition metal used in stainless steel



Three Points

Mel Giedroyc + Mg = Magnesium

QUESTION FOUR - NAME THE PERSON, THE ELEMENT SYMBOL & THE ELEMENT ?

Name the son of Daedalus, who in,
mythology, attempted to escape from Crete
by means of wings constructed from feathers
and wax

+

The heaviest of the stable halogens, it is
purple in all forms and used as an antiseptic

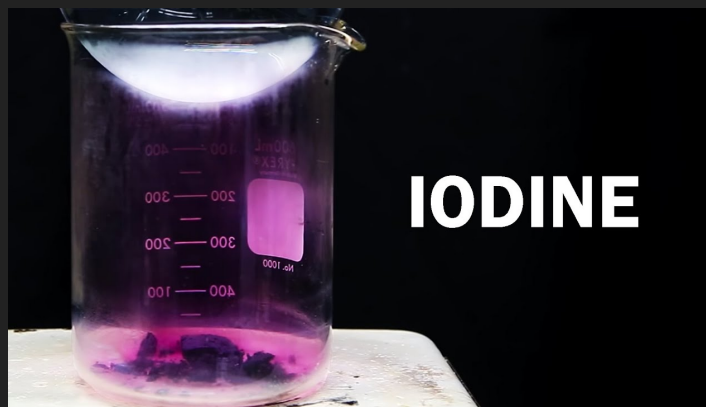


QUESTION FOUR - NAME THE PERSON, THE ELEMENT SYMBOL & THE ELEMENT ?

Name the son of Daedalus, who in, mythology, attempted to escape from Crete by means of wings constructed from feathers and wax

+

The heaviest of the stable halogens, it is purple in all forms and used as an antiseptic



Three Points

1. Icarus + I = Iodine

QUESTION FIVE - NAME THE PERSON, THE ELEMENT SYMBOL & THE ELEMENT ?

A former English international cricketer turned
television personality who won I'm a
Celebrity...Get Me Out of Here

+

A highly un-reactive, precious, silver-white metal.



QUESTION FIVE - NAME THE PERSON, THE ELEMENT SYMBOL & THE ELEMENT ?

A former English international cricketer turned
television personality who won I'm a
Celebrity...Get Me Out of Here

+

A highly un-reactive, precious, silver-white metal.



Three Points

1. Phil Tufnell + Pt = Platinum

**THANK YOU SO MUCH
FOR GIVING
MY QUIZ
A GO !**

I HOPE YOU ENJOYED IT



**WHY NOT EMAIL AND
LET ME KNOW HOW
YOU HAVE DONE**

LORDTEDQUIZ@ME.COM